

## Control pressure switch MDR 43



- Max. cut-out pressure 16 bar
- Transparent cover
- 1 N.C. + 1 N.O.
- Acc. to EN 60947
- Flange = Die-cast aluminium

Order reference	Type Code	ON / OFF Rotary knob	Pressure range P <sub>OFF</sub> in bar	Flange	Weight (in g)	Part No.
MDR 43/3	MDR-43 BAA BAAA xxxA020 XAA XXX	-	0,5 - 3	G 1/2" Alu	420	212775
MDR 43/3	MDR-43 BBA BAAA xxxA020 XAA XXX	-	0,5 - 3	G 1/4" Alu	420	212782
MDR 43/6	MDR-43 DAA BAAA xxxA040 XAA XXX	-	2,5 - 6	G 1/2" Alu	420	212799
MDR 43/6	MDR-43 DBA BAAA xxxA040 XAA XXX	-	2,5 - 6	G 1/4" Alu	420	212805
MDR 43/11	MDR-43 GAA BAAA xxxA090 XAA XXX	-	5 - 11	G 1/2" Alu	420	212812
MDR 43/11	MDR-43 GBA BAAA xxxA090 XAA XXX	-	5 - 11	G 1/4" Alu	420	212829
MDR 43/16	MDR-43 HAA BAAA xxxA120 XAA XXX	-	8 - 16	G 1/2" Alu	420	212836
MDR 43/16	MDR-43 HBA BAAA xxxA120 XAA XXX	-	8 - 16	G 1/4" Alu	420	212843

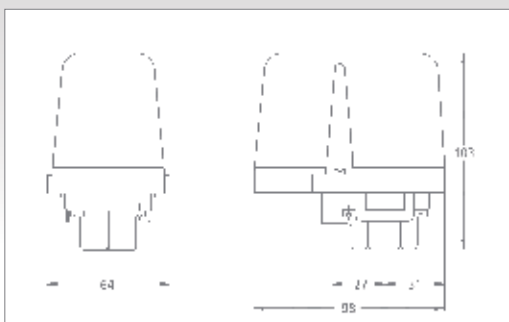
Cut-in pressure is tightest possible pressure differential  
 The cut-out pressure is preset  
 Cable glands for retrofit assembly to be ordered separately, see accessories

Technical Data MDR 43 acc. to EN 60947	
Rated insulation voltage U <sub>i</sub>	500 V
Rated insulation voltage U <sub>e</sub> (AC 15)	250 V
Rated insulation voltage I <sub>the</sub> (AC 15)	8 A
Rated insulation voltage I <sub>e</sub> (max.)	10 A
Mechanical life (AC 15) Cycles	> 1,5 x 10 <sup>5</sup>
Mechanical life Cycles	> 1 x 10 <sup>6</sup>
Max. electrical cycles Cycles/h	120
Max. mechanical cycles Cycles/h	600
Bursting strength P <sub>z</sub>	> 60 bar

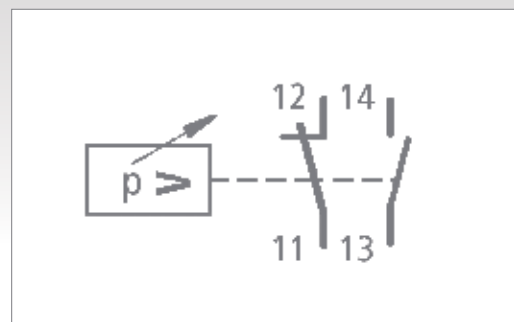
Technical Data MDR 43 acc. to EN 60947	
Permissible medium temperature Air	- 30...+ 80 °C
Permissible medium temperature Water	+ 80 °C
Conductor cross-section 1 .. flexible cable 1 x / 2 x	2,5 / 2,5mm <sup>2</sup>
Conductor cross-section 1 ... rigid cable 1 x / 2 x	2,5 / 2,5mm <sup>2</sup>
Protection acc. to EN 60520	IP 44

Diaphragm media resistance MDR 43
A detailed overview of diaphragm media resistance for all pressure switches can be found on page 22. Please read the information carefully.

## Dimensions / Circuit Diagrams MDR 43



Pressure switch MDR 43

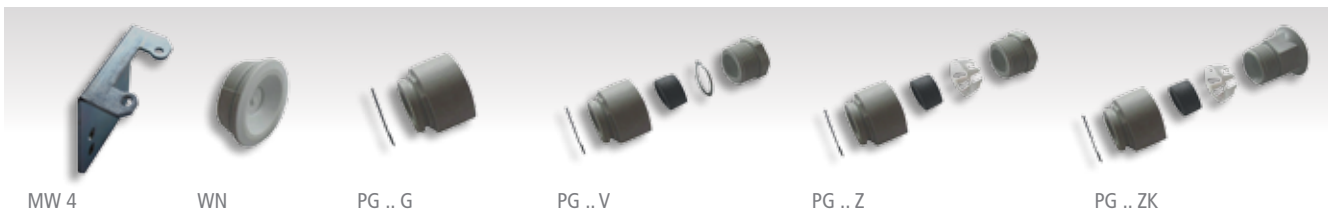


# Control pressure switch MDR 43

## Accessories MDR 43

Order reference	Description	Weight (in g)	Part No.
	<b>Cable glands</b>		
WN	Grommet	6	200888
PG 11 G	Conduits for mounting cable glands (inner thread)	6	200895
PG 11 V	Cable glands complete	12	200901
PG 11 Z	With strain relief	12	200925
PG 11 ZK	With strain relief and cable support	12	200918
PG 13,5 G	Conduits for mounting cable glands (inner thread)	6	200963
PG 13,5 V	Cable glands complete	12	200932
PG 13,5 Z	With strain relief	12	200956
PG 13,5 ZK	With strain relief and cable support	12	200949
MW 4	Mounting bracket for MDR 4 and MDR 43	65	230021
	<b>Cover</b>		
H43 (Cover MDR 43)	Cover (Transparent)	70	230038

## Wall-mounting bracket / Cable glands MDR 43



Control pressure switches

## Pressure Diagrams MDR 43

